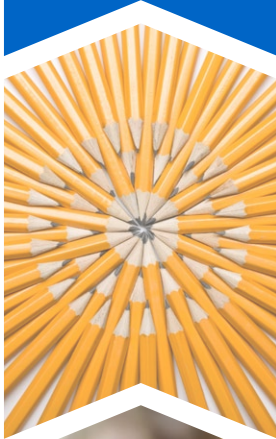


SARC

2015-16
School Accountability
Report Card

Published in 2016-17



Highlands Elementary School

Julie Blackburn
Principal
jblackburn@pittsburg.k12.ca.us

4141 Harbor Street
Pittsburg, CA 94565

Grades: K-5
Phone: (925) 473-2440
www.pittsburg.k12.ca.us/highlands

CDS Code: 07-61788-6004535

Para español, visita:
www.pittsburg.k12.ca.us

Pittsburg USD





Principal's Message

At Highlands Elementary School, we celebrate the diversity of our student population. We acknowledge that all students deserve the best possible education. We are in our second year as a Full Service Community School and take pride in the academic as well as social-emotional needs of our students.

Highlands Elementary has 21 classes that span from transitional kindergarten to fifth grade, plus one Counseling Enriched Class for special education in grades 3-5. In addition, Highlands houses three special-education preschool classes and one general-education preschool class. Highlands' staff is committed to assuring every student feels respected and nurtured. Several incentive programs are in place to acknowledge exemplary academic behavior. Teachers are becoming increasingly focused on essential Common Core State Standards at each grade level and are implementing teaching strategies that ensure student success, not only in English language arts, but in mathematics as well. Highlands teachers regularly analyze student-achievement data, collaborate on best practices and set benchmark goals for student achievement.

We will offer our students a comprehensive, challenging and rigorous education. At Highlands, we value the education of the whole child. It is important that we provide a well-rounded curriculum that emphasizes the creative process in our efforts to expose each student to the reality of the world around them. In addition to the basics of reading, writing and mathematics, our students will be exposed to the sciences, social studies and fine arts. We will begin a school garden program this year that engages students in the importance of conservation and sustainability. It is often through the varied interests of our children that they are motivated to excel intellectually. At Highlands Elementary, we will also make every effort to provide our students with a culturally responsive education that reflects the dynamics and diversity of our student population. To address the importance of growing into civic-minded adults, we will continue with student leadership to address student needs and actions toward building a positive community.

We are here to serve our community. We are proud and pleased to play a significant role in the lives of the children entrusted to our care.

School Mission Statement

Highlands is committed to "Being Our Best Selves" by the actions we take in teaching, learning and speaking to move our school community toward a future with choice and opportunity.

School Vision Statement

All of Highlands students can learn because of what we do:

- Rigor: Collaborate and implement high-quality instructional practices
- Relationship: Communicate with all stakeholders to build school-to-home connection
- Reflect: Collect and analyze data
- Rewards: Celebrate student successes

Professional Development

The Local Control Accountability Plan (LCAP), Local Education Agency Plan (LEAP) addendum and the sites' Single Plan for Student Achievement (SPSA) are the genesis of selected focus for professional development. The data from student achievement drives the selection of adult learning opportunities. Based on student-achievement data, including the data from underserved student groups, the district is focusing professional development on integrating the Common Core State Standards in English language arts (ELA) and mathematics.

Every teacher participates in three full-release professional-development days. In addition, educators collaborate with each other in facilitated grade-level/department meetings. Site administrators provide support and feedback to staff members related to targeted improvements. Pittsburg teachers also participate in a structured Collaboration Cycle where they meet with their colleagues to create common lessons that they teach in their classrooms, while their colleagues and instructional coaches provide them feedback.

Summer institutes are numerous and comprehensive. In-depth trainings are available in implementing core curricula, intervention programs, English language development (ELD), structured engagement, expository writing, reading comprehension and mathematics, as a few examples. Teachers fulfill the No Child Left Behind Act requirements for being highly qualified with district support. Compensation is provided to teachers who attend professional development outside the workday.



School Accountability Report Card

In accordance with state and federal requirements, the School Accountability Report Card (SARC) is put forth annually by all public schools as a tool for parents and interested parties to stay informed of the school's progress, test scores and achievements.

District Mission Statement

It is the mission of Pittsburg Unified School District (PUSD) to inspire our students, to ensure they achieve equity in academic excellence and to bring students closer together through shared experiences in learning. We believe the cultural diversity of our community, and our youth are our greatest assets. We endeavor to bring our students to their fullest potential and to create lifelong learners who will contribute positively to the world.

Governing Board

- Mr. Duane Smith, president
- Mr. De'Shawn Woolridge, vice president
- Dr. Laura Canciamilla, trustee
- Mr. George Miller, trustee
- Mr. Joseph Arenivar, trustee

Professional Development Days

Three-Year Data

	2014-15	2015-16	2016-17
Highlands ES	3 days	3 days	3 days



Board Goals

1. Student Achievement

- Students will demonstrate continuous improvement in academic excellence, as measured by clear and accessible multiple assessments
- Opportunity gaps will have accelerated reduction through purposeful interventions and supports

2. Powerful Instruction

- Effective instruction aligned to the common core will be expected, supported and measured to ensure continuous improvement of student achievement

3. Outstanding Staff

- The district will recruit "highly qualified" and appropriately credentialed teachers
- The district will support, retain and promote quality staff through good working conditions, competitive total compensation packages, and coaching and professional development

4. Quality Learning Environment

- High-quality facilities
- Safe, orderly and secure schools
- School site culture of caring and respect
- State-of-the-art technology

5. High-Performing, Accountable Organization

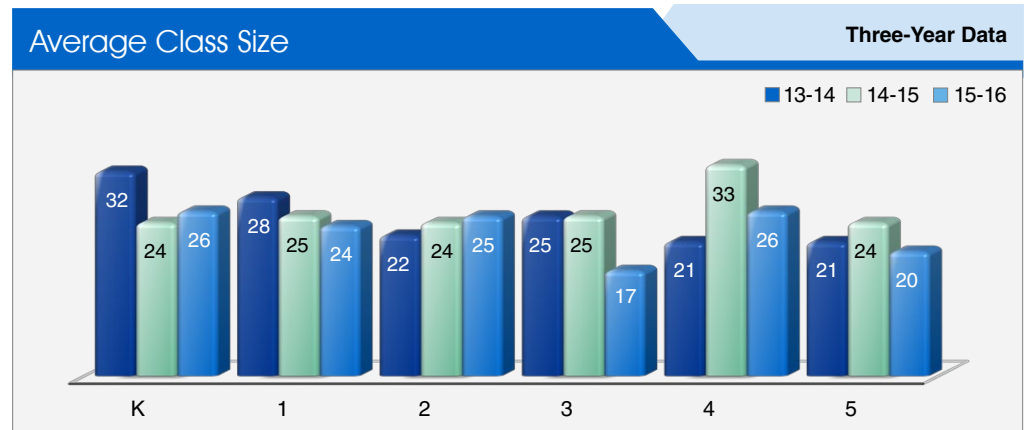
- Fiscal stability and responsible long-range planning
- Comprehensive accountability system
- Effective informational and instructional technology
- Responsible, respectful, efficient and transparent service

6. Meaningful Collaboration, Partnership and Parental Engagement

- Timely and accessible communication with community
- Strategic community partnerships
- Focus on parent and student engagement, including diverse opportunities for involvement
- Strong communication and relationships between parents/guardians and schools
- Proactive engagement in students' academic and personal growth
- Board and superintendent and staff communication

Class Size Distribution

The bar graph displays the three-year data for average class size, and the table displays the three-year data for the number of classrooms by size. The number of classes indicates how many classrooms fall into each size category (a range of total students per classroom). At the secondary school level, this information is reported by subject area rather than grade level.



Number of Classrooms by Size Three-Year Data

Grade	2013-14			2014-15			2015-16		
	Number of Students								
	1-20	21-32	33+	1-20	21-32	33+	1-20	21-32	33+
K		3		5				4	
1		3		3				4	
2		5		3				3	
3		3		4			3	1	
4	2	3				2	1		3
5	2	3		1	3	1	1	3	

California Physical Fitness Test

Each spring, all students in grades 5, 7 and 9 are required to participate in the California Physical Fitness Test (PFT). The Fitnessgram® is the designated PFT for students in California public schools put forth by the State Board of Education. The PFT measures six key fitness areas:

- Aerobic Capacity
- Body Composition
- Flexibility
- Abdominal Strength and Endurance
- Upper Body Strength and Endurance
- Trunk Extensor Strength and Flexibility

Encouraging and assisting students in establishing lifelong habits of regular physical activity is the primary goal of the Fitnessgram. The table shows the percentage of students meeting the fitness standards of being in the "healthy fitness zone" for the most recent testing period. For more detailed information on the California PFT, please visit www.cde.ca.gov/ta/tg/pf.

California Physical Fitness Test 2015-16 School Year

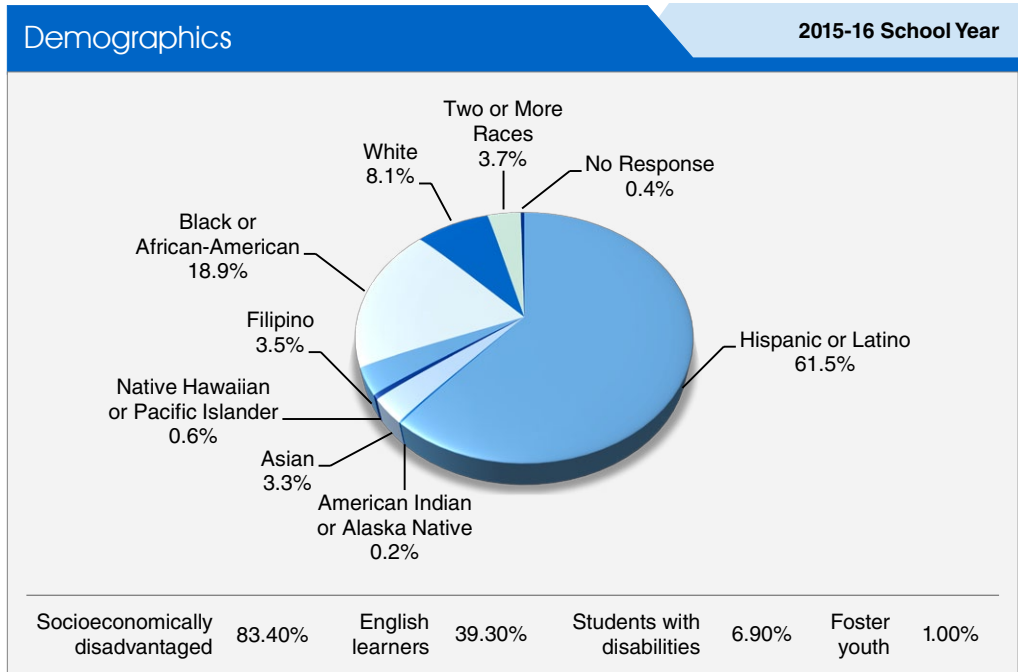
Percentage of Students Meeting Fitness Standards	Highlands ES
	Grade 5
Four of six standards	31.7%
Five of six standards	12.2%
Six of six standards	29.3%



*School Motto:
"Being Our Best Selves"*

Enrollment by Student Group

The total enrollment at the school was 519 students for the 2015-16 school year. The pie chart displays the percentage of students enrolled in each group.



Federal Intervention Program

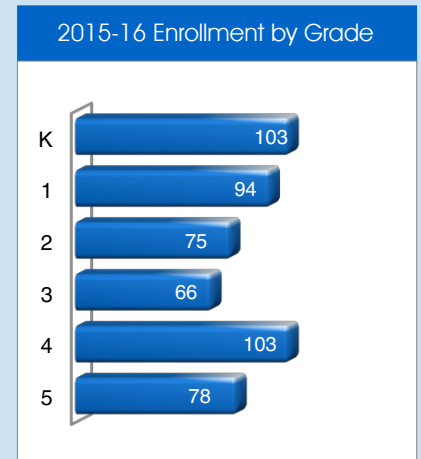
Schools and districts will not be newly identified for Program Improvement (PI) in the 2016-17 school year under the Every Student Succeeds Act (ESSA) that became law in December 2015, which reauthorized the Elementary and Secondary Education Act (ESEA). Schools and districts receiving Title I, Part A funding for the 2015-16 school year and were "In PI" in 2015-16 will retain their same PI status and placement year for 2016-17. Schools and districts receiving Title I, Part A funding for the 2015-16 school year and either had a status of "Not in PI" for the 2015-16 school year or did not receive Title I, Part A funding in the 2014-15 school year will have a status of "Not in PI" for the 2016-17 school year. The percentage of schools identified for Program Improvement is calculated by taking the number of schools currently in PI within the district and dividing it by the total number of Title I schools within the district.

This table displays the 2016-17 Program Improvement status for the school and district. For detailed information about PI identification, please visit www.cde.ca.gov/ta/ac/ay/tidetermine.asp.

Federal Intervention Program		2016-17 School Year
	Highlands ES	Pittsburg USD
Program Improvement status	In PI	In PI
First year of Program Improvement	2009-2010	2008-2009
Year in Program Improvement	Year 4	Year 3
Number of schools currently in Program Improvement		8
Percentage of schools currently in Program Improvement		72.70%

Enrollment by Grade

The bar graph displays the total number of students enrolled in each grade for the 2015-16 school year.



Suspensions and Expulsions

This table shows the school, district, and state suspension and expulsion rates for the most recent three-year period. Note: Students are only counted one time, regardless of the number of suspensions.

Suspension and Expulsion Rates			
Highlands ES			
	13-14	14-15	15-16
Suspension rates	5.7%	4.9%	6.9%
Expulsion rates	0.0%	0.0%	0.0%
Pittsburg USD			
	13-14	14-15	15-16
Suspension rates	10.8%	7.8%	8.0%
Expulsion rates	0.1%	0.0%	0.0%
California			
	13-14	14-15	15-16
Suspension rates	4.4%	3.8%	3.7%
Expulsion rates	0.1%	0.1%	0.1%



California Assessment of Student Performance and Progress (CAASPP)

For the 2015-16 school year, the CAASPP consists of several key components, including:

California Alternate Assessment (CAA) test includes both ELA/literacy and mathematics in grades 3-8 and 11. The CAA is given to those students with significant cognitive disabilities which prevent them from taking the Smarter Balanced Assessments with universal tools, designated supports or accommodations.

Smarter Balanced Assessments include ELA/literacy in grades 3-8 and 11. Smarter Balanced Assessments are designed to measure student progress toward college and career readiness.

The assessments under CAASPP show how well students are doing in relation to the state-adopted content standards. On each of these assessments, student aggregate scores are reported as achievement standards. For more information on the CAASPP assessments, please visit www.cde.ca.gov/ta/tg/ca.

CAASPP by Student Group: English Language Arts/Literacy and Mathematics

The tables on the following pages display the percentage of students that met or exceeded state standards in English language arts and mathematics for the school by student groups for grades 3-5.

The “percentage met or exceeded” is calculated by taking the total number of students who met or exceeded the standard on the Smarter Balanced Summative Assessment plus the total number of students who met the standard on the CAAs divided by the total number of students who participated in both assessments.

Note: The number of students tested includes all students who participated in the test whether they received a score or not. However, the number of students tested is not the number that was used to calculate the achievement level percentages. The achievement level percentages are calculated using only students who received scores.

CAASPP Test Results for All Students: Science (grades 5, 8 and 10)

Science test results include California Standards Tests (CSTs), California Modified Assessment (CMA) and California Alternate Performance Assessment (CAPA) in grades 5, 8 and 10. The tables show the percentage of students scoring at proficient or advanced.

Percentage of Students Scoring at Proficient or Advanced							Three-Year Data		
	Highlands ES			Pittsburg USD			California		
Subject	13-14	14-15	15-16	13-14	14-15	15-16	13-14	14-15	15-16
Science	33%	18%	38%	49%	42%	42%	60%	56%	54%

CAASPP Test Results by Student Group: Science (grades 5, 8 and 10)

Science test results include CSTs, CMA, and CAPA in grades 5, 8, and 10. The “Proficient or Advanced” is calculated by taking the total number of students who scored proficient or Advanced on the science assessment divided by the total number of students with valid scores.

Percentage of Students Scoring at Proficient or Advanced				2015-16 School Year	
Group	Total Enrollment	Number of Students with Valid Scores	Percentage of Students with Valid Scores	Percentage Proficient or Advanced	
All students	85	82	96.47%	37.80%	
Male	41	40	97.56%	45.00%	
Female	44	42	95.45%	30.95%	
Black or African-American	17	16	94.12%	25.00%	
American Indian or Alaska Native	❖	❖	❖	❖	
Asian	❖	❖	❖	❖	
Filipino	❖	❖	❖	❖	
Hispanic or Latino	46	46	100.00%	34.78%	
Native Hawaiian or Pacific Islander	❖	❖	❖	❖	
White	❖	❖	❖	❖	
Two or more races	❖	❖	❖	❖	
Socioeconomically disadvantaged	63	63	100.00%	33.33%	
English learners	20	20	100.00%	10.00%	
Students with disabilities	❖	❖	❖	❖	
Students receiving Migrant Education services	❖	❖	❖	❖	
Foster youth	❖	❖	❖	❖	

CAASPP Test Results for All Students: English Language Arts/Literacy and Mathematics (grades 3-8 and 11)

The table below shows the percentage of students meeting or exceeding the state standards in English language arts (ELA) and literacy and mathematics.

Percentage of Students Meeting or Exceeding State Standards					Two-Year Data	
	Highlands ES		Pittsburg USD		California	
Subject	14-15	15-16	14-15	15-16	14-15	15-16
English language arts/literacy	21%	35%	30%	34%	44%	48%
Mathematics	17%	19%	21%	22%	33%	36%

❖ Scores are not shown when the number of students tested is 10 or fewer, either because the number of students tested in this category is too small for statistical accuracy or to protect student privacy.



CAASPP Results by Student Group: English Language Arts and Mathematics - Grade 3

Percentage of Students Meeting or Exceeding State Standards

2015-16 School Year

English Language Arts: Grade 3

Group	Total Enrollment	Number Tested	Percentage Tested	Percentage Met or Exceeded
All students	65	63	96.90%	33.30%
Male	33	31	93.90%	29.00%
Female	32	32	100.00%	37.50%
Black or African-American	❖	❖	❖	❖
American Indian or Alaska Native	❖	❖	❖	❖
Asian	❖	❖	❖	❖
Filipino	❖	❖	❖	❖
Hispanic or Latino	43	41	95.40%	31.70%
Native Hawaiian or Pacific Islander	❖	❖	❖	❖
White	❖	❖	❖	❖
Two or more races	❖	❖	❖	❖
Socioeconomically disadvantaged	51	49	96.10%	30.60%
English learners	31	29	93.60%	31.00%
Students with disabilities	❖	❖	❖	❖
Students receiving Migrant Education services	❖	❖	❖	❖
Foster youth	❖	❖	❖	❖

Mathematics: Grade 3

Group	Total Enrollment	Number Tested	Percentage Tested	Percentage Met or Exceeded
All students	65	63	96.90%	28.60%
Male	33	31	93.90%	35.50%
Female	32	32	100.00%	21.90%
Black or African-American	❖	❖	❖	❖
American Indian or Alaska Native	❖	❖	❖	❖
Asian	❖	❖	❖	❖
Filipino	❖	❖	❖	❖
Hispanic or Latino	43	41	95.40%	29.30%
Native Hawaiian or Pacific Islander	❖	❖	❖	❖
White	❖	❖	❖	❖
Two or more races	❖	❖	❖	❖
Socioeconomically disadvantaged	51	49	96.10%	24.50%
English learners	31	29	93.60%	24.10%
Students with disabilities	❖	❖	❖	❖
Students receiving Migrant Education services	❖	❖	❖	❖
Foster youth	❖	❖	❖	❖

❖ Scores are not shown when the number of students tested is 10 or fewer, either because the number of students tested in this category is too small for statistical accuracy or to protect student privacy.



CAASPP Results by Student Group: English Language Arts and Mathematics - Grade 4

Percentage of Students Meeting or Exceeding State Standards

2015-16 School Year

English Language Arts: Grade 4

Group	Total Enrollment	Number Tested	Percentage Tested	Percentage Met or Exceeded
All students	98	97	99.00%	34.00%
Male	54	53	98.20%	26.40%
Female	44	44	100.00%	43.20%
Black or African-American	17	17	100.00%	41.20%
American Indian or Alaska Native	❖	❖	❖	❖
Asian	❖	❖	❖	❖
Filipino	❖	❖	❖	❖
Hispanic or Latino	63	63	100.00%	30.20%
Native Hawaiian or Pacific Islander	❖	❖	❖	❖
White	❖	❖	❖	❖
Two or more races	❖	❖	❖	❖
Socioeconomically disadvantaged	81	81	100.00%	34.60%
English learners	44	43	97.70%	18.60%
Students with disabilities	❖	❖	❖	❖
Students receiving Migrant Education services	❖	❖	❖	❖
Foster youth	❖	❖	❖	❖

Mathematics: Grade 4

Group	Total Enrollment	Number Tested	Percentage Tested	Percentage Met or Exceeded
All students	97	97	100.00%	19.60%
Male	54	54	100.00%	16.70%
Female	43	43	100.00%	23.30%
Black or African-American	17	17	100.00%	23.50%
American Indian or Alaska Native	❖	❖	❖	❖
Asian	❖	❖	❖	❖
Filipino	❖	❖	❖	❖
Hispanic or Latino	62	62	100.00%	14.50%
Native Hawaiian or Pacific Islander	❖	❖	❖	❖
White	❖	❖	❖	❖
Two or more races	❖	❖	❖	❖
Socioeconomically disadvantaged	80	80	100.00%	20.00%
English learners	44	44	100.00%	2.30%
Students with disabilities	❖	❖	❖	❖
Students receiving Migrant Education services	❖	❖	❖	❖
Foster youth	❖	❖	❖	❖

❖ Scores are not shown when the number of students tested is 10 or fewer, either because the number of students tested in this category is too small for statistical accuracy or to protect student privacy.



CAASPP Results by Student Group: English Language Arts and Mathematics - Grade 5

Percentage of Students Meeting or Exceeding State Standards

2015-16 School Year

English Language Arts: Grade 5

Group	Total Enrollment	Number Tested	Percentage Tested	Percentage Met or Exceeded
All students	85	83	97.70%	37.40%
Male	41	40	97.60%	35.00%
Female	44	43	97.70%	39.50%
Black or African-American	17	16	94.10%	25.00%
American Indian or Alaska Native	❖	❖	❖	❖
Asian	❖	❖	❖	❖
Filipino	❖	❖	❖	❖
Hispanic or Latino	46	46	100.00%	39.10%
Native Hawaiian or Pacific Islander	❖	❖	❖	❖
White	❖	❖	❖	❖
Two or more races	❖	❖	❖	❖
Socioeconomically disadvantaged	63	63	100.00%	34.90%
English learners	20	20	100.00%	15.00%
Students with disabilities	❖	❖	❖	❖
Students receiving Migrant Education services	❖	❖	❖	❖
Foster youth	❖	❖	❖	❖

Mathematics: Grade 5

Group	Total Enrollment	Number Tested	Percentage Tested	Percentage Met or Exceeded
All students	85	83	97.70%	12.10%
Male	41	40	97.60%	17.50%
Female	44	43	97.70%	7.00%
Black or African-American	17	16	94.10%	6.30%
American Indian or Alaska Native	❖	❖	❖	❖
Asian	❖	❖	❖	❖
Filipino	❖	❖	❖	❖
Hispanic or Latino	46	46	100.00%	6.50%
Native Hawaiian or Pacific Islander	❖	❖	❖	❖
White	❖	❖	❖	❖
Two or more races	❖	❖	❖	❖
Socioeconomically disadvantaged	63	63	100.00%	9.50%
English learners	20	20	100.00%	0.00%
Students with disabilities	❖	❖	❖	❖
Students receiving Migrant Education services	❖	❖	❖	❖
Foster youth	❖	❖	❖	❖

❖ Scores are not shown when the number of students tested is 10 or fewer, either because the number of students tested in this category is too small for statistical accuracy or to protect student privacy.



Availability of Textbooks and Instructional Materials

The following lists the percentage of pupils who lack their own assigned textbooks and instructional materials.

Percentage of Students Lacking Materials by Subject	
2016-17 School Year	
Reading/language arts	0%
Mathematics	0%
Science	0%
History/social science	0%
Visual and performing arts	0%
Foreign language	0%
Health	0%

Currency of Textbooks

This table displays the date when the most recent hearing was held to adopt a resolution on the sufficiency of instructional materials.

Currency of Textbooks	
2016-17 School Year	
Data collection date	9/28/2016

Textbooks and Instructional Materials

California state-adopted textbooks are recommended by district committees, adopted by the board and then purchased. Each site, through funds supplied by the district, has been able to provide each student with a copy of every core textbook to use in class and take home for homework.

The district has purchased textbooks and instructional materials for grades K-12; said textbooks and instructional materials are used by students at each grade level in each school. The Pittsburg Unified School District Governing Board declared during its fall school board meeting that PUSD has provided sufficient textbooks and instructional materials consistent with the state board-adopted curriculum framework cycle.

Textbooks and Instructional Materials List		2016-17 School Year
Subject	Textbook	Adopted
Reading/language arts	<i>Treasures</i> , Macmillan/McGraw-Hill (K-5)	2010
Mathematics	<i>Go Math!</i> , Houghton Mifflin Harcourt (K-5)	2016
Science	Macmillan/McGraw-Hill (K-5)	2007
History/social science	Scott Foresman (K-5)	2006

Quality of Textbooks

The following table outlines the criteria required for choosing textbooks and instructional materials.

Quality of Textbooks		2016-17 School Year
Criteria	Yes/No	
Are the textbooks adopted from the most recent state-approved or local governing-board-approved list?	Yes	
Are the textbooks consistent with the content and cycles of the curriculum frameworks adopted by the State Board of Education?	Yes	
Do all students, including English learners, have access to their own textbooks and instructional materials to use in class and to take home?	Yes	

Public Internet Access

Internet access is available at public libraries and other locations that are publicly accessible (e.g., the California State Library). Access to the internet at libraries and public locations is generally provided on first-come, first-served basis. Other use restrictions include the hours of operation, the length of time that a workstation may be used (depending on availability), the types of software programs available at a workstation, and the ability to print documents.

Parental Involvement

We have many opportunities for parent involvement. Formal participation opportunities are offered with our active English Learner Advisory Committee (ELAC) and School Site Council (SSC).

Parents are also encouraged to volunteer in classrooms; attend class field trips; assist in vision and hearing screening, picture day, and book fairs; and help with our Family Literacy Nights and other school activities. Highlands is proud of the partnership we have with our parents.

The Highlands Parent Club is very active. There is a parent volunteer present every morning to assist with morning drop-off procedures. The group organizes fundraisers and plans events that make school fun for students.

For more information on how to become involved at our school, please contact our parent liaison Tasha Santiago at (925) 473-2440.





School Facility Items Inspected

The tables show the results of the school’s most recent inspection using the Facility Inspection Tool (FIT) or equivalent school form. The following is a list of items inspected.

- **Systems:** Gas systems and pipes, sewer, mechanical systems (heating, ventilation and air-conditioning)
- **Interior:** Interior surfaces (floors, ceilings, walls and window casings)
- **Cleanliness:** Pest/vermin control, overall cleanliness (school grounds, buildings, rooms and common areas)
- **Electrical:** Electrical systems (interior and exterior)
- **Restrooms/fountains:** Restrooms, sinks and drinking fountains (interior and exterior)
- **Safety:** Fire-safety equipment, emergency systems, hazardous materials (interior and exterior)
- **Structural:** Structural condition, roofs
- **External:** Windows/doors/gates/fences, playgrounds/school grounds

School Facility Good Repair Status

This inspection determines the school facility’s good repair status using ratings of good condition, fair condition or poor condition. The overall summary of facility conditions uses ratings of exemplary, good, fair or poor.

School Facility Good Repair Status		2016-17 School Year	
Items Inspected	Repair Status	Items Inspected	Repair Status
Systems	Good	Restrooms/fountains	Good
Interior	Good	Safety	Good
Cleanliness	Good	Structural	Good
Electrical	Poor	External	Good
Overall summary of facility conditions			Good
Date of the most recent school site inspection			8/8/2016
Date of the most recent completion of the inspection form			8/8/2016

Deficiencies and Repairs

The table lists the repairs required for all deficiencies found during the site inspection. Regardless of each item’s repair status, all deficiencies are listed. For all items inspected that were found to not be in “good repair,” a work-order has been created and maintenance will be done before the end of the 2016-17 school year. Maintenance items will be prioritized so that student safety is not compromised.

Deficiencies and Repairs		2016-17 School Year
Items Inspected	Deficiencies and Action Taken or Planned	
Interior	Room 26’s ceiling tiles have yellow stains.	
Electrical	Rooms 1, 4, 5, 6 and 9; the third-, fourth- and fifth- grade hallway; and rooms 19, 20, 21 and 22 have lights out.	
Restrooms/fountains	Foyer restroom has a sewer issue, odor from sewer line. Playground faucets: One has high pressure, one has low pressure.	
External	Play structure damage, exposed sharp metal, holes in floor.	

School Safety

The school safety plan includes information about our school’s social climate and physical environment. It also includes the school emergency procedures, the district disaster-preparedness plan, the sexual-harassment policy, child-abuse reporting procedures, and the district Student Rights and Responsibilities Handbook. Parents and visitors may access the school safety plan in our school office. The school safety plan was most recently reviewed, updated and discussed with school faculty in March 1, 2017.

School Facilities

Highlands Elementary School was built in the early 1960s and currently houses approximately 650 students, which include three special education preschool classes and one regular preschool class. The main structure of the school contains the administrative offices, cafeteria/multipurpose room, computer lab, library, 23 classrooms, offices for support staff, and an inner courtyard. We also have five portable classrooms, making a total of 31 classrooms.

In 2001-02, the school was modernized—updating our heating, ventilating, electrical and data wiring (in all classrooms, library, labs and offices) systems, as well as the flooring, wall treatment and roofing.

In the summer of 2013, the roof was replaced, and the cafeteria was given a face-lift with new wall siding, paint, blinds and tables. There were also two new heating and air units installed; one above the office and one above the cafeteria.

During the 2014-15 school year, the exterior of the site was painted.

Our custodians work hard keeping our school clean and safe for our staff and students. We have one full-time custodian here during school hours and 1.5 custodians who keep our school clean after hours.

We have a schoolwide discipline plan that focuses on students being safe, responsible and respectful.

All visitors are expected to enter through the front of the school and check in at the school office, where they each receive a visitor’s pass before entering the campus.

Our staff rotates duties before and after school and at recess, ensuring the safety of our students during times of ingress and egress.

Every site is inspected according to the guidelines generated by the Williams settlement. At this time, we have no safety-related discrepancies that have not been corrected. The site administrator and the custodial staff address school cleanliness daily. Restrooms are cleaned on a routine basis, and discrepancies are noted, work orders created and corrections made on a timely basis. School grounds and facilities are adequate for the student enrollments assigned to the site. Deferred maintenance items are scheduled and completed in a timely manner.





Academic Counselors and School Support Staff

This table displays information about academic counselors and support staff at the school and their full-time equivalent (FTE).

Academic Counselors and School Support Staff Data	
2015-16 School Year	
Academic Counselors	
FTE of academic counselors	0.0
Average number of students per academic counselor	◇
Support Staff	
FTE	
Social/behavioral counselor	4.0
Career development counselor	0.0
Library media teacher (librarian)	0.0
Library media services staff (paraprofessional)	1.0
Psychologist	0.5
Social worker	0.0
Nurse	0.5
Speech/language/hearing specialist	0.5
Resource specialist (nonteaching)	0.0
Other	
FTE	
Full service community schools coordinator	1.0

Teacher Qualifications

This table shows information about teacher credentials and teacher qualifications. Teachers without a full credential include teachers with district and university internships, pre-internships, emergency or other permits, and waivers. For more information on teacher credentials, visit www.ctc.ca.gov.

Teacher Credential Information	Three-Year Data			
	Pittsburg USD	Highlands ES		
Teachers	16-17	14-15	15-16	16-17
With a full credential	467	30	24	22
Without a full credential	41	1	0	3
Teaching outside subject area of competence (with full credential)	3	0	0	0

Teacher Misassignments and Vacant Teacher Positions

This table displays the number of teacher misassignments (positions filled by teachers who lack legal authorization to teach that grade level, subject area, student group, etc.) and the number of vacant teacher positions (not filled by a single designated teacher assigned to teach the entire course at the beginning of the school year or semester). Please note that total teacher misassignments includes the number of teacher misassignments of English learners.

Teacher Misassignments and Vacant Teacher Positions	Three-Year Data		
	Highlands ES		
Teachers	14-15	15-16	16-17
Teacher misassignments of English learners	0	0	0
Total teacher misassignments	0	0	0
Vacant teacher positions	0	0	0

Core Academic Classes Taught by Highly Qualified Teachers

High-poverty schools are defined as those schools with student eligibility of approximately 40 percent or more in the free and reduced-priced meals program. Low-poverty schools are those with student eligibility of approximately 39 percent or less in the free and reduced-priced meals program. For more information about ESEA teacher requirements, visit www.cde.ca.gov/nclb/sr/tq.

Highly Qualified Teachers	2015-16 School Year	
	Percentage of Classes in Core Academic Subjects	
	Taught by Highly Qualified Teachers	Not Taught by Highly Qualified Teachers
Highlands ES	100.00%	0.00%
All schools in district	87.22%	12.78%
High-poverty schools in district	87.22%	12.78%
Low-poverty schools in district	◇	◇

◇ Not applicable.



Financial Data

The financial data displayed in this SARC is from the 2014-15 fiscal year. The most current fiscal information available provided by the state is always two years behind the current school year and one year behind most other data included in this report. For detailed information on school expenditures for all districts in California, see the California Department of Education (CDE) Current Expense of Education & Per-pupil Spending web page at www.cde.ca.gov/ds/fd/ec. For information on teacher salaries for all districts in California, see the CDE Certificated Salaries & Benefits web page at www.cde.ca.gov/ds/fd/cs. To look up expenditures and salaries for a specific school district, see the Ed-Data website at www.ed-data.org.

District Financial Data

This table displays district teacher and administrative salary information and compares the figures to the state averages for districts of the same type and size based on the salary schedule. Note: The district salary data does not include benefits.

District Salary Data	2014-15 Fiscal Year	
	Pittsburg USD	Similar Sized District
Beginning teacher salary	\$45,158	\$44,958
Midrange teacher salary	\$67,437	\$70,581
Highest teacher salary	\$83,804	\$91,469
Average elementary school principal salary	\$108,631	\$113,994
Average middle school principal salary	\$117,618	\$120,075
Average high school principal salary	\$118,714	\$130,249
Superintendent salary	\$190,000	\$218,315
Teacher salaries: percentage of budget	35%	38%
Administrative salaries: percentage of budget	6%	5%

Financial Data Comparison

This table displays the school's per-pupil expenditures from unrestricted sources and the school's average teacher salary and compares it to the district and state data.

Financial Data Comparison	2014-15 Fiscal Year	
	Expenditures Per Pupil From Unrestricted Sources	Annual Average Teacher Salary
Highlands ES	\$4,373	\$56,797
Pittsburg USD	\$6,418	\$60,508
California	\$5,677	\$74,216
School and district: percentage difference	-31.9%	-6.1%
School and California: percentage difference	-23.0%	-23.5%

Types of Services Funded

The following services are provided at the district and/or site level:

- Collaboration and Intervention Team
- Professional development including ELA and math trainings, cross-cultural language and academic-development examination, ADEPT, Systematic ELD, Lesson Study, and data protocol
- Parent and family engagement opportunities and training
- Extended-day and summer intervention programs
- College-readiness programs
- Counseling
- Class-size reduction
- Summer programs
- Credit recovery programs

School Financial Data

The following table displays the school's average teacher salary and a breakdown of the school's expenditures per pupil from unrestricted and restricted sources.

School Financial Data	
2014-15 Fiscal Year	
Total expenditures per pupil	\$4,535
Expenditures per pupil from restricted sources	\$162
Expenditures per pupil from unrestricted sources	\$4,373
Annual average teacher salary	\$56,797

Expenditures Per Pupil

Supplemental/restricted expenditures come from money whose use is controlled by law or by a donor. Money that is designated for specific purposes by the district or governing board is not considered restricted. Basic/unrestricted expenditures are from money whose use, except for general guidelines, is not controlled by law or by a donor.

Data for this year's SARC was provided by the California Department of Education and school and district offices. For additional information on California schools and districts and comparisons of the school to the district, the county and the state, please visit DataQuest at <http://data1.cde.ca.gov/dataquest>. DataQuest is an online resource that provides reports for accountability, test data, enrollment, graduates, dropouts, course enrollments, staffing and data regarding English learners. Per Education Code Section 35256, each school district shall make hard copies of its annually updated report card available, upon request each year, on or before February 1.

All data accurate as of January 2017.

School Accountability Report Card

PUBLISHED BY:

SIA School
Innovations
& Achievement
www.sia-us.com | 800.487.9234